

HDPE 100

PE FITTINGS

POLYETHYLENE
DISPLAYS GOOD
CHEMICAL
RESISTANCE MATERIAL
STRENGTH AND RIGIDITY
WITHIN A TEMPERATURE
RANGE OF.
40° C AND + 80° C.





GENERAL PRODUCT SPECIFICATION

Alongside its outstanding processability, polyethylene (PE) displays good chemical resistance and offers strength and rigidity within a temperature range of between - 40 °C and + 80 °C. Due to the inclusion of soot particles, PE is resistant to UV light and therefore also suitable for long-term outdoor applications.

The recent development in the family of PE on the basis of PE 100 is PE 100 RC (resistant to crack) with an improved characteristic against slow crack propagation.

The electrically conductive material PE-EL dissipates static charges and prevents sparking.



ADVANTAGES OF PE 100 FITTINGS

- Versatility of use.
- Very good chemical and corrosion resistance.
- Proven physiological harmlessness and therefore suitable for contact with food.
- No influence on drinking water quality.
- Biologically inert; no support of microbial growth.
- High mechanical tensile strength.
- Secure solvent cementing using Tangit.
- Use of tin stabilizers for fittings and valves.

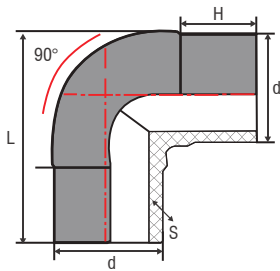
UV AND WEATHER RESISTANCE

PE 100 is very weather-resistant. Even longer exposure to direct sunlight, wind and rain does hardly any damage to the material. Despite its very good weather resistance to ultraviolet radiation, PE 100 loses some of its impact strength. In extreme applications, it can be advantageous to protect the material from direct sunlight exposure. Contact your HYDROPLAST representative for suitable protective measures.



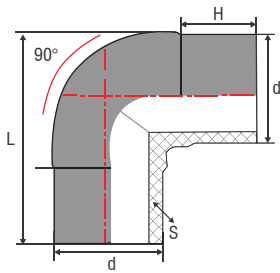
PE 100 PROPERTIES

Material specifications	Test Method	Value	Unit of Measurement
Density,	ISO 1183	0.960	g/cm ³
Yield stress	DIN EN ISO 527	23	MPa
Elongation at yied	DIN EN ISO 527	9	%
Elongation at break	DIN EN ISO 527	600	%
Tensile modulus of elasticity	DIN EN ISO 527	1100	MPa
Impact strength	DIN EN ISO 179	no break	kJ/m ²
Notched impact strength	DIN EN ISO 179	30	kJ/m ²
Ball indentation hardness	DIN EN ISO 2039-1	40	MPa
Shore hardness	ISO 868	65	D
Mean coefficient of linear thermal expansion	DIN 53752	1.8 · 10 ⁻⁴	K ⁻¹
Thermal conductivity	DIN 52612	0.38	W/m · K
FNCT	ISO 16770/PAS 1075	> 300	Hours
Surface resistance	DIN IEC 167	1.10 ¹⁴	Ohm
Combustibility	DIN 4102	B2	-
Physiological acceptability	as per BfR	yes	-
Chemical resistance	according to DIN 8075 Supplement	fulfilled	-
Temperature range	-	40 to + 80	°C
MRS	ISO/TR 9082	10	MPa
OIT	EN 728	30	min

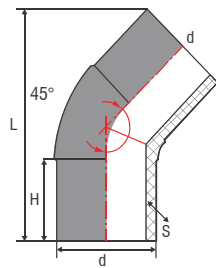
PE 100
ELBOW 90°
SDR 17 - PN 10


PART #	DIAMETER Ød	L	H	S
0329LE900200HP	63	133	65	3.71
0329LE900250HP	75	150	75	4.41
0329LE900300HP	90	176	80	5.29
0329LE900400HP	110	195	75	6.47
0329LE900400HP	125	215	80	7.35
0329LE900500HP	140	225	80	8.24
0329LE900600HP	160	270	90	9.41
0329LE900700HP	180	280	90	10.59
0329LE900800HP	200	305	95	11.76
0329LE900900HP	225	350	110	13.24
0329LE901000HP	250	360	100	14.71
0329LE901100HP	280	395	108	16.47
0329LE901200HP	315	415	100	18.53
0329LE901400HP	400	460	100	20.88
0329LE901600HP	450	525	110	23.53
0329LE901800HP	500	630	160	26.47
0329LE902000HP	560	705	180	29.41
0329LE902200HP	630	780	200	32.94
0329LE902400HP	710	865	220	37.06
0329LE902800HP	800	900	170	41.76

PE 100
ELBOW 90°
SDR 11 - PN 16

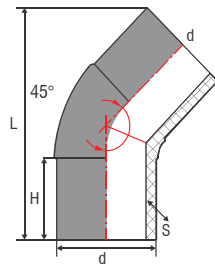


PART #	DIAMETER Ød	L	H	S
0329NE900200HP	63	133	65	5.73
0329NE900250HP	75	150	75	6.82
0329NE900300HP	90	176	80	8.18
0329NE900400HP	110	195	75	10.00
0329NE900500HP	125	215	80	11.36
0329NE900600HP	140	225	80	12.73
0329NE900700HP	160	270	90	14.55
0329NE900800HP	180	280	90	16.36
0329NE900900HP	200	305	95	18.18
0329NE901000HP	225	350	110	20.45
0329NE901100HP	250	360	100	22.73
0329NE901200HP	280	395	108	25.45
0329NE901400HP	315	415	100	28.64
0329NE901600HP	355	460	100	32.27
0329NE901800HP	400	525	110	36.36
0329NE902000HP	450	630	160	40.91
0329NE902200HP	500	705	180	45.45
0329NE902400HP	560	780	200	50.91
0329NE902800HP	630	865	220	57.27

PE 100
ELBOW 45°
SDR 17 - PN 10


PART #	DIAMETER Ød	L	H	S
0329LE450200HP	63	170	65	5.73
0329LE450250HP	75	190	70	6.82
0329LE450300HP	90	205	75	8.18
0329LE450400HP	110	260	85	10.00
0329LE450400HP	125	238	80	11.36
0329LE450500HP	140	255	80	12.73
0329LE450600HP	160	325	100	14.55
0329LE450700HP	180	300	90	16.36
0329LE450800HP	200	360	110	18.18
0329LE450900HP	225	365	110	20.45
0329LE451000HP	250	385	110	25.45
0329LE451100HP	280	400	108	28.64
0329LE451200HP	315	430	110	32.27
0329LE451400HP	355	430	100	36.36
0329LE451600HP	400	490	110	40.91
0329LE451800HP	450	610	160	45.45
0329LE452000HP	500	685	180	50.91
0329LE452200HP	560	770	200	57.27
0329LE452400HP	630	845	220	64.55
0329LE452800HP	710	830	170	72.73
0329LE453400HP	800	900	170	-

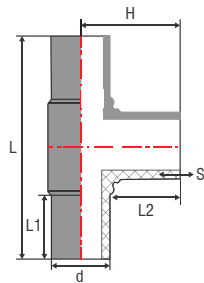
PE 100
ELBOW 45°
SDR 11 - PN 16



PART #	DIAMETER Ød	L	H	S
O329NE450200HP	63	170	65	5.73
O329NE450250HP	75	190	70	6.82
O329NE450300HP	90	205	75	8.18
O329NE450400HP	110	260	85	10.00
O329NE450400HP	125	238	80	11.36
O329NE450500HP	140	255	80	12.73
O329NE450600HP	160	325	100	14.55
O329NE450700HP	180	300	90	16.36
O329NE450800HP	200	360	110	18.18
O329NE450900HP	225	365	110	20.45
O329NE451000HP	250	385	110	25.45
O329NE451100HP	280	400	108	28.64
O329NE451200HP	315	430	110	32.27
O329NE451400HP	355	430	100	36.36
O329NE451600HP	400	490	110	40.91
O329NE451800HP	450	610	160	45.45
O329NE452000HP	500	685	180	50.91
O329NE452200HP	560	770	200	57.27
O329NE452400HP	630	845	220	64.55
O329NE452800HP	710	830	170	72.73
O329NE453400HP	800	900	170	

PE 100

EQUAL TEE

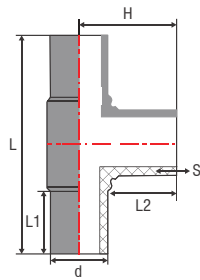
SDR 17 - PN 10


PART #	DIAMETER Ød	L	L1	L2	H	S
0329LE900200HP	63	182	58	56	90	3.71
0329LE900250HP	75	232	70	70	117	4.41
0329LE900300HP	90	240	70	70	120	5.29
0329LE900400HP	110	265	70	70	133	6.47
0329LE900450HP	125	305	80	80	150	7.35
0329LE900500HP	140	320	80	80	160	8.24
0329LE900600HP	160	348	85	85	176	9.41
0329LE900700HP	180	400	90	90	197	10.59
0329LE900800HP	200	420	95	95	205	11.76
0329LE900900HP	225	485	90	110	242	13.24
0329LE901000HP	250	430	110	95	230	14.71
0329LE901100HP	280	535	90	95	275	16.47
0329LE901200HP	315	500	90	95	302	18.53
0329LE901300HP	355	565	100	100	302	20.88
0329LE901400HP	400	655	112	112	330	23.53
0329LE901500HP	450	750	135	150	405	26.47
0329LE901600HP	500	800	135	170	455	29.41
0329LE901700HP	560	910	140	170	475	32.94
0329LE901800HP	630	970	150	160	485	37.06
0329LE901900HP	710	1140	210	210	570	41.76
0329LE902000HP	800	1260	230	230	630	47.06

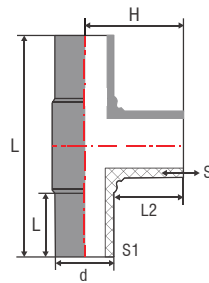
PE 100

EQUAL TEE

SDR 11 - PN 16



PART #	DIAMETER Ød	L	L1	L2	H	S
0329NE900200HP	63	182	58	56	90	5.73
0329NE900250HP	75	232	70	70	117	6.82
0329NE900300HP	90	240	70	70	120	8.18
0329NE900400HP	110	265	70	70	133	10.00
0329NE900450HP	125	305	80	80	150	11.36
0329NE900500HP	140	320	80	80	160	12.73
0329NE900600HP	160	348	85	85	176	14.55
0329NE900700HP	180	400	90	90	197	16.36
0329NE900800HP	200	420	95	95	205	18.18
0329NE900900HP	225	485	90	110	242	20.45
0329NE901000HP	250	430	110	95	230	22.73
0329NE901100HP	280	535	90	95	275	25.45
0329NE901200HP	315	500	90	95	302	28.64
0329NE901300HP	355	565	100	100	302	32.27
0329NE901400HP	400	655	112	112	330	36.36
0329NE901500HP	450	750	135	150	405	40.91
0329NE901600HP	500	800	135	170	455	45.45
0329NE901700HP	560	910	140	170	475	50.91
0329NE901800HP	630	970	150	160	485	57.27

PE 100
REDUCING TEE
SDR 17 - PN 10


PART #	DIAMETER Ød	L	L1	L2	H	S1	S
0329LRTM02500150HP	75-50	199	70	55	94	4.41	2.94
0329LRTM03000150HP	90-50	243	80	65	115	5.29	2.94
0329LRTM03000200HP	90-63	243	80	68	123	5.29	3.70
0329LRTM03000250HP	90-75	270	80	75	130	5.29	4.41
0329LRTM04000150HP	110-50	242	83	60	125	6.47	2.94
0329LRTM04000200HP	110-63	242	83	62	130	6.47	3.70
0329LRTM04000250HP	110-75	275	83	80	138	6.47	4.41
0329LRTM04000300HP	110-90	275	83	82	140	6.47	5.29
0329LRTM04500300HP	125-90	305	80	75	150	7.35	5.29
0329LRTM05000400HP	125-110	305	80	75	150	7.35	6.47
0329LRTM05000300HP	140-90	253	75	75	155	8.23	5.29
0329LRTM05000400HP	140-110	253	70	80	160	8.23	6.47
0329LRTM06000200HP	160-63	333	100	80	175	9.41	3.70
0329LRTM06000250HP	160-75	333	100	80	175	9.41	4.41
0329LRTM06000300HP	160-90	333	100	80	175	9.41	5.29
0329LRTM06000400HP	160-110	333	100	80	175	9.41	6.47
0329LRTM06000450HP	160-125	380	98	100	190	9.41	7.35
0329LRTM07000300HP	180-90	270	85	80	180	10.58	5.29
0329LRTM07000400HP	180-110	270	85	85	185	10.58	6.47
0329LRTM07000450HP	180-125	400	90	85	185	10.58	7.35
0329LRTM08000200HP	200-63	338	95	75	195	11.76	3.70
0329LRTM08000250HP	200-75	338	95	80	195	11.76	4.41
0329LRTM08000300HP	200-90	338	95	85	195	11.76	5.29

PART #	DIAMETER Ød	L	L1	L2	H	S1	S2
O329LRTM08000400HP	200-110	338	95	85	195	11.76	6.47
O329LRTM08000600HP	200-160	368	95	85	200	11.76	9.41
O329LRTM09000300HP	225-90	285	90	75	200	13.23	5.29
O329LRTM09000400HP	225-110	285	85	75	200	13.23	6.47
O329LRTM09000600HP	225-160	335	85	75	200	13.23	9.41
O329LRTM09000700HP	225-180	400	85	75	200	13.23	10.58
O329LRTM10000200HP	250-63	365	110	85	235	14.70	3.70
O329LRTM10000250HP	250-75	365	110	90	235	14.70	4.41
O329LRTM10000300HP	250-90	365	110	100	245	14.70	5.29
O329LRTM10000400HP	250-110	365	110	110	245	14.70	6.47
O329LRTM10000600HP	250-160	505	110	110	250	14.70	9.41
O329LRTM10000800HP	250-200	505	110	110	250	14.70	11.76
O329LRTM11000400HP	280-110	300	100	100	240	16.47	6.47
O329LRTM11000600HP	280-160	387	100	100	250	16.47	9.41
O329LRTM11000800HP	280-200	387	100	105	250	16.47	11.76
O329LRTM12000200HP	315-63	370	110	90	270	18.52	3.70
O329LRTM12000250HP	315-75	370	110	90	270	18.52	4.41
O329LRTM12000300HP	315-90	370	110	100	280	18.52	5.29
O329LRTM12000400HP	315-110	370	110	110	280	18.52	6.47
O329LRTM12000600HP	315-160	460	110	110	285	18.52	9.41
O329LRTM12000800HP	315-200	460	110	110	285	18.52	11.76
O329LRTM12001000HP	315-250	575	103	110	285	18.52	14.70
O329LRTM14000300HP	355-90	330	110	100	287	20.88	5.29
O329LRTM14000400HP	355-110	350	110	100	287	20.88	6.47
O329LRTM14000600HP	355-160	400	110	100	287	20.88	9.41
O329LRTM14000800HP	355-200	440	110	100	287	20.88	11.76
O329LRTM14001000HP	355-250	490	110	100	287	20.88	14.70
O329LRTM14001200HP	355-315	555	110	100	287	20.88	18.52
O329LRTM16000300HP	400-90	340	110	100	310	23.52	5.29
O329LRTM16000400HP	400-110	360	110	100	310	23.52	6.47
O329LRTM16000600HP	400-160	400	110	100	310	23.52	9.41
O329LRTM16000800HP	400-200	450	110	100	310	23.52	11.76
O329LRTM16001000HP	400-250	490	110	100	310	23.52	14.70
O329LRTM16001200HP	400-315	555	110	100	310	23.52	18.52

PART #	DIAMETER Ød	L	L1	L2	H	S1	S2
0329LRTM16001400HP	400-355	595	110	100	310	23.52	20.88
0329LRTM18000400HP	450-110	375	120	120	365	26.47	6.47
0329LRTM18000450HP	450-125	464	150	120	365	26.47	7.35
0329LRTM18000600HP	450-160	464	130	120	365	26.47	9.41
0329LRTM18000800HP	450-200	464	120	120	365	26.47	11.76
0329LRTM18000900HP	450-225	545	150	130	375	26.47	13.23
0329LRTM18001000HP	450-250	545	140	130	375	26.47	14.70
0329LRTM18001100HP	450-280	600	140	140	385	26.47	16.47
0329LRTM18001200HP	450-315	600	130	140	385	26.47	18.52
0329LRTM18001400HP	450-355	660	140	160	405	26.47	20.88
0329LRTM18001600HP	450-400	670	120	160	405	26.47	23.52
0329LRTM20000400HP	500-110	398	130	135	420	29.41	6.47
0329LRTM20000600HP	500-160	495	140	135	420	29.41	9.41



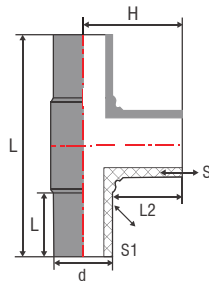
0329LRTM20000900HP	500-225	545	150	135	420	29.41	13.23
0329LRTM20001200HP	500-315	635	145	145	430	29.41	18.52
0329LRTM22000400HP	560-110	410	135	140	445	32.94	6.47
0329LRTM22000600HP	560-160	450	135	140	445	32.94	9.41
0329LRTM22000800HP	560-200	508	135	140	445	32.94	11.76
0329LRTM22001000HP	560-250	545	135	140	445	32.94	14.70
0329LRTM22001200HP	560-315	605	135	145	450	32.94	18.52
0329LRTM22001600HP	560-400	720	135	160	465	32.94	23.52
0329LRTM24000400HP	630-110	475	145	135	480	37.05	6.47



PART #	DIAMETER Ød	L	L1	L2	H	S1	S2
O329LRTM24000600HP	630-160	475	140	140	485	37.05	9.41
O329LRTM24000800HP	630-200	550	150	145	490	37.05	11.76
O329LRTM24001000HP	630-250	555	140	145	490	37.05	14.70
O329LRTM24001200HP	630-315	665	150	145	490	37.05	18.52
O329LRTM24001600HP	630-400	725	145	160	505	37.05	23.52
O329LRTM24001800HP	630-450	800	150	180	525	37.05	26.47
O329LRTM28000400HP	710-110	505	190	160	520	41.76	6.47
O329LRTM28000500HP	710-160	545	190	160	520	41.76	9.41
O329LRTM28001000HP	710-250	630	190	160	520	41.76	14.70
O329LRTM28001600HP	710-400	790	195	175	535	41.76	23.52
O329LRTM32000400HP	800-110	500	180	160	570	47.05	6.47
O329LRTM32000600HP	800-160	590	200	160	570	47.05	9.41
O329LRTM32001000HP	800-250	630	170	160	570	47.05	14.70
O329LRTM32001200HP	800-315	720	190	160	570	47.05	18.52
O329LRTM32001600HP	800-400	800	190	180	590	47.05	23.52
O329LRTM32002400HP	800-630	1020	190	210	620	47.05	37.05

PE 100

REDUCING TEE

SDR 11 - PN 16


PART #	DIAMETER Ød	L	L1	L2	H	S1	S
O329LRM02500150HP	75-50	199	70	55	94	6.81	4.54
O329LRM03000150HP	90-50	243	80	65	115	8.18	4.54
O329LRM02500200HP	90-63	243	80	68	123	8.18	5.72
O329LRM02500250HP	90-75	270	80	75	130	8.18	6.81
O329LRM04000150HP	110-50	242	83	60	125	10	4.54
O329LRM04000200HP	110-63	242	83	62	130	10	5.72
O329LRM04000250HP	110-75	275	83	80	138	10	6.81
O329LRM04000300HP	110-90	275	83	82	140	10	8.18
O329LRM04500300HP	125-90	305	80	75	150	11.36	8.18
O329LRM04500400HP	125-110	305	80	75	150	11.36	10
O329LRM05000300HP	140-90	253	75	75	155	8.23	8.18
O329LRM05000400HP	140-110	253	70	80	160	8.23	10
O329LRM06000200HP	160-63	333	100	80	175	14.54	5.72
O329LRM06000250HP	160-75	333	100	80	175	14.54	6.81
O329LRM06000300HP	160-90	333	100	80	175	14.54	8.18
O329LRM06000400HP	160-110	333	100	80	175	14.54	10
O329LRM06000450HP	160-125	380	98	100	190	14.54	11.36
O329LRM07000300HP	180-90	270	85	80	180	16.36	8.18
O329LRM07000400HP	180-110	270	85	85	185	16.36	10
O329LRM07000450HP	180-125	400	90	85	185	16.36	11.36
O329LRM08000200HP	200-63	338	95	75	195	18.18	5.72
O329LRM08000250HP	200-75	338	95	80	195	18.18	6.81
O329LRM08000300HP	200-90	338	95	85	195	18.18	8.18

PART #	DIAMETER Ød	L	L1	L2	H	S1	S2
0329LRTM08000400HP	200-110	338	95	85	195	18.18	10
0329LRTM08000600HP	200-160	368	95	85	200	18.18	14.54
0329LRTM09000300HP	225-90	285	90	75	200	20.45	8.18
0329LRTM09000400HP	225-110	285	85	75	200	20.45	10
0329LRTM09000600HP	225-160	335	85	75	200	20.45	14.54
0329LRTM09000700HP	225-180	400	85	75	200	20.45	16.36
0329LRTM10000200HP	250-63	365	110	85	235	22.72	5.72
0329LRTM10000250HP	250-75	365	110	90	235	22.72	6.81
0329LRTM10000300HP	250-90	365	110	100	245	22.72	8.18
0329LRTM10000400HP	250-110	365	110	110	245	22.72	10
0329LRTM10000600HP	250-160	505	110	110	250	22.72	14.54
0329LRTM10000800HP	250-200	505	110	110	250	22.72	18.18
0329LRTM11000400HP	280-110	300	100	100	240	25.45	10
0329LRTM11000600HP	280-160	387	100	100	250	25.45	14.54
0329LRTM11000800HP	280-200	387	100	105	250	25.45	18.18
0329LRTM12000200HP	315-63	370	110	90	270	28.63	5.72
0329LRTM12000250HP	315-75	370	110	90	270	28.63	6.81
0329LRTM12000300HP	315-90	370	110	100	280	28.63	8.18
0329LRTM12000400HP	315-110	370	110	110	280	28.63	10
0329LRTM12000600HP	315-160	460	110	110	285	28.63	14.5
0329LRTM12000800HP	315-200	460	110	110	285	28.63	18.18
0329LRTM12001000HP	315-250	575	103	110	285	28.63	22.72
0329LRTM12000800HP	355-90	330	110	100	287	32.27	8.18
0329LRTM14000400HP	355-110	350	110	100	287	32.27	10
0329LRTM14000600HP	355-160	400	110	100	287	32.27	14.5
0329LRTM14000800HP	355-200	440	110	100	287	32.27	18.18
0329LRTM14001000HP	355-250	490	110	100	287	32.27	22.72
0329LRTM14001200HP	355-315	555	110	100	287	30.27	28.63
0329LRTM16000300HP	400-90	340	110	100	310	36.36	8.18
0329LRTM16000400HP	400-110	360	110	100	310	36.36	10
0329LRTM16000600HP	400-160	400	110	100	310	36.36	14.5
0329LRTM16000800HP	400-200	450	110	100	310	36.36	18.18
0329LRTM16001000HP	400-250	490	110	100	310	36.36	22.72
0329LRTM16001200HP	400-315	555	110	100	310	36.36	28.63

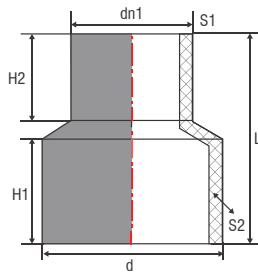


PART #	DIAMETER Ød	L	L1	L2	H	S1	S2
O329LRTM16001400HP	400-355	595	110	100	310	36.36	32.27
O329LRTM18000400HP	450-110	375	120	120	365	40.90	10
O329LRTM18000450HP	450-125	464	150	120	365	40.90	10.90
O329LRTM18000600HP	450-160	464	130	120	365	40.90	14.54
O329LRTM18000800HP	450-200	464	120	120	365	40.90	18.18
O329LRTM18000900HP	450-225	545	150	130	375	40.90	20.45
O329LRTM18001000HP	450-250	545	140	130	375	40.90	22.72
O329LRTM18001100HP	450-280	600	140	140	385	40.90	25.45
O329LRTM18001200HP	450-315	600	130	140	385	40.90	28.63
O329LRTM18000600HP	450-355	660	140	160	405	40.90	32.27
O329LRTM18001600HP	450-400	670	120	160	405	40.90	36.36
O329LRTM20000400HP	500-110	398	130	135	420	45.45	10
O329LRTM20000600HP	500-160	495	140	135	420	45.45	14.54
O329LRTM20000900HP	500-225	545	150	135	420	45.45	20.45
O329LRTM20001200HP	500-315	635	145	145	430	45.45	28.63
O329LRTM22000400HP	560-110	410	135	140	445	50.90	10
O329LRTM22000600HP	560-160	450	135	140	445	50.90	14.54
O329LRTM22000800HP	560-200	508	135	140	445	50.90	18.18
O329LRTM22001000HP	560-250	545	135	140	445	50.90	22.72
O329LRTM22001200HP	560-315	605	135	145	450	50.90	28.63
O329LRTM22001600HP	560-400	720	135	160	465	50.90	36.36
O329LRTM24000400HP	630-110	475	145	135	480	57.27	10

PART #	DIAMETER Ød	L	L1	L2	H	S1	S2
O329LRM24000600HP	630-160	475	140	140	485	57.27	14.54
O329LRM24000800HP	630-200	550	150	145	490	57.27	18.18
O329LRM24001000HP	630-250	555	140	145	490	57.27	22.72
O329LRM24001200HP	630-315	665	150	145	490	57.27	28.63
O329LRM24001600HP	630-400	725	145	160	505	57.27	36.36
O329LRM24001800HP	630-450	800	150	180	525	57.27	40.90



**PE 100
REDUCER
SDR 17 - PN 10**



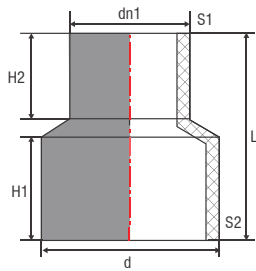
PART #	DIAMETER Ød	L	H1	H2	S1	S2
0329LRTM02500150HP	75-50	130	56	58	4.41	2.94
0329LRTM02500200HP	75-63	130	59	64	4.41	3.70
0329LRTM03000150HP	90-50	138	63	52	5.29	2.94
0329LRTM03000150HP	90-50	138	63	53	5.29	2.94
0329LRTM03000200HP	90-63	138	63	60	5.29	3.70
0329LRTM03000200HP	90-63	172	78	60	5.29	3.70
0329LRTM03000250HP	90-75	172	78	60	5.29	4.41
0329LRTM03000250HP	90-75	172	78	65	5.29	4.41
0329LRTM04000150HP	110-50	172	78	65	6.47	2.94
0329LRTM04000150HP	110-50	183	78	70	6.47	2.94
0329LRTM04000200HP	110-63	183	78	68	6.47	3.70
0329LRTM04000200HP	110-63	183	78	68	6.47	3.70
0329LRTM04000250HP	110-75	183	78	72	6.47	4.41
0329LRTM04000250HP	110-75	180	80	65	6.47	4.41
0329LRTM04000300HP	110-90	180	80	70	6.47	5.29
0329LRTM04000300HP	110-90	180	80	70	6.47	5.29
0329LRTM04500300HP	125-90	180	80	75	7.35	5.29
0329LRTM04500400HP	125-110	180	80	70	7.35	6.47
0329LRTM06000200HP	160-63	203	85	67	9.41	3.70



PART #	DIAMETER Ød	L	H1	H2	S1	S2
0329LRTM06000250HP	160-75	208	85	75	9.41	4.41
0329LRTM06000300HP	160-90	214	85	83	9.41	5.29
0329LRTM06000400HP	160-110	214	85	83	9.41	6.47
0329LRTM06000450HP	160-125	214	85	85	9.41	7.35
0329LRTM07000400HP	180-110	170	85	80	10.58	6.47
0329LRTM07000450HP	180-125	170	85	80	10.58	7.35
0329LRTM08000200HP	200-63	218	100	67	11.76	3.70
0329LRTM08000250HP	200-75	218	100	75	11.76	4.41
0329LRTM08000300HP	200-90	218	100	93	11.76	5.29
0329LRTM08000400HP	200-110	218	100	97	11.76	6.47
0329LRTM08000600HP	200-160	210	100	100	11.76	9.41
0329LRTM08000700HP	200-180	210	100	108	11.76	10.58
0329LRTM09000400HP	225-110	218	80	87	13.23	6.47
0329LRTM09000600HP	225-160	218	80	80	13.23	9.41
0329LRTM09000800HP	225-200	218	80	90	13.23	11.76
0329LRTM10000400HP	250-110	260	90	100	14.70	6.47
0329LRTM10000600HP	250-160	230	90	93	14.70	9.41
0329LRTM10000800HP	250-200	230	90	97	14.70	11.76

PART #	DIAMETER Ød	L	H1	H2	S1	S2
0329LRTM10000900HP	250-225	230	90	100	14.70	13.23
0329LRTM11000400HP	280-110	255	105	95	16.47	6.47
0329LRTM11000600HP	280-160	245	105	105	16.47	9.41
0329LRTM11000700HP	280-180	245	105	105	16.47	10.58
0329LRTM11000800HP	280-200	245	105	120	16.47	11.76
0329LRTM11001000HP	280-250	245	105	130	16.47	14.70
0329LRTM12000400HP	315-110	235	90	87	18.52	6.47
0329LRTM12000600HP	315-160	235	90	85	18.52	9.41
0329LRTM12000800HP	315-200	240	90	90	18.52	11.76
0329LRTM12001000HP	315-250	240	90	100	18.52	14.70
0329LRTM14000400HP	355-110	270	105	100	20.88	6.47
0329LRTM14000600HP	355-160	275	105	110	20.88	9.41
0329LRTM14000800HP	355-200	260	105	110	20.88	11.76
0329LRTM14001000HP	355-250	240	105	110	20.88	14.70
0329LRTM16000800HP	400-200	270	100	110	23.52	11.76
0329LRTM16001000HP	400-250	250	100	110	23.52	14.70
0329LRTM16001200HP	400-315	230	100	110	23.52	18.52
0329LRTM18000800HP	450-200	270	105	100	26.47	11.76
0329LRTM18001000HP	450-250	270	105	110	26.47	14.70
0329LRTM18001200HP	450-315	250	105	110	26.47	18.52
0329LRTM18001600HP	450-400	245	105	120	26.47	23.52
0329LRTM20000800HP	500-200	280	98	105	29.41	11.76
0329LRTM20001000HP	500-250	280	98	110	29.41	14.70
0329LRTM20001200HP	500-315	275	98	110	29.41	18.52
0329LRTM20001600HP	500-400	275	98	120	29.41	23.52
0329LRTM20001800HP	500-450	275	98	120	29.41	26.47
0329LRTM22001200HP	560-315	280	105	110	32.94	18.52
0329LRTM22001600HP	560-400	260	105	120	32.94	23.52
0329LRTM22001800HP	560-450	250	105	120	32.94	26.47
0329LRTM24001200HP	630-315	285	110	100	37.05	18.52
0329LRTM24001600HP	630-400	285	110	120	37.05	23.52
0329LRTM24001800HP	630-450	275	110	120	37.05	26.47

PE 100 REDUCER SDR 11 - PN 16



PART #	DIAMETER Ød	L	H1	H2	S1	S2
0329LRTM02500150HP	75-50	130	56	58	6.8	4.5
0329LRTM02500200HP	75-63	130	59	64	6.8	5.72
0329LRTM03000150HP	90-50	138	63	52	8.18	4.5
0329LRTM03000150HP	90-50	138	63	53	8.18	4.5
0329LRTM03000200HP	90-63	138	63	60	8.18	5.72
0329LRTM03000200HP	90-63	172	78	60	8.18	5.72
0329LRTM03000250HP	90-75	172	78	60	8.18	6.8
0329LRTM03000250HP	90-75	172	78	65	8.18	6.8
0329LRTM04000150HP	110-50	172	78	65	10	4.54
0329LRTM04000150HP	110-50	183	78	70	10	4.54
0329LRTM04000200HP	110-63	183	78	68	10	5.72
0329LRTM04000200HP	110-63	183	78	68	10	5.72
0329LRTM04000250HP	110-75	183	78	72	10	6.8
0329LRTM04000250HP	110-75	180	80	65	10	6.8
0329LRTM04000300HP	110-90	180	80	70	10	8.18
0329LRTM04000300HP	110-90	180	80	70	10	8.18
0329LRTM04500300HP	125-90	180	80	75	11.36	8.18
0329LRTM04500400HP	125-110	180	80	70	11.36	10
0329LRTM06000200HP	160-63	203	85	67	14.54	5.72

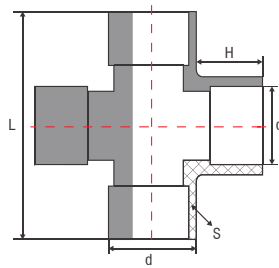


PART #	DIAMETER Ød	L	H1	H2	S1	S2
0329LRTM06000250HP	160-75	208	85	75	14.54	6.8
0329LRTM06000300HP	160-90	214	85	83	14.54	8.18
0329LRTM06000400HP	160-110	214	85	83	14.54	10
0329LRTM06000450HP	160-125	214	85	85	14.54	11.36
0329LRTM07000400HP	180-110	170	85	80	16.36	10
0329LRTM07000450HP	180-125	170	85	80	16.36	11.36
0329LRTM08000200HP	200-63	218	100	67	11.76	5.72
0329LRTM08000250HP	200-75	218	100	75	11.76	6.8
0329LRTM08000300HP	200-90	218	100	93	11.76	8.18
0329LRTM08000400HP	200-110	218	100	97	11.76	10
0329LRTM08000600HP	200-160	210	100	100	11.76	14.54
0329LRTM08000700HP	200-180	210	100	108	11.76	16.36
0329LRTM09000400HP	225-110	218	80	87	20.45	10
0329LRTM08000600HP	225-160	218	80	80	20.45	14.54
0329LRTM09000800HP	225-200	218	80	90	20.45	18.18
0329LRTM10000400HP	250-110	260	90	100	22.72	10
0329LRTM10000600HP	250-160	230	90	93	22.72	14.54
0329LRTM10000800HP	250-200	230	90	97	22.72	18.18

PART #	DIAMETER Ød	L	H1	H2	S1	S2
0329LRTM10000900HP	250-225	230	90	100	22.72	20.45
0329LRTM11000400HP	280-110	255	105	95	25.45	10
0329LRTM11000400HP	280-160	245	105	105	25.45	14.54
0329LRTM11000700HP	280-180	245	105	105	25.45	16.36
0329LRTM11000800HP	280-200	245	105	120	25.45	18.18
0329LRTM11001000HP	280-250	245	105	130	25.45	22.72
0329LRTM12000400HP	315-110	235	90	87	28.63	10
0329LRTM12000600HP	315-160	235	90	85	28.63	14.54
0329LRTM12000800HP	315-200	240	90	90	28.63	18.18
0329LRTM12001000HP	315-250	240	90	100	28.63	22.72
0329LRTM14000400HP	355-110	270	105	100	32.27	10
0329LRTM14000600HP	355-160	275	105	110	32.27	14.54
0329LRTM14000800HP	355-200	260	105	110	32.27	18.18
0329LRTM14001000HP	355-250	240	105	110	32.27	22.72
0329LRTM16000900HP	400-200	270	100	110	36.36	18.18
0329LRTM16001000HP	400-250	250	100	110	36.36	22.72
0329LRTM16001200HP	400-315	230	100	110	36.36	28.63
0329LRTM18000800HP	450-200	270	105	100	40.90	18.18
0329LRTM18001000HP	450-250	270	105	110	40.90	22.72
0329LRTM18001200HP	450-315	250	105	110	40.90	28.63
0329LRTM18001600HP	450-400	245	105	120	40.90	36.36
0329LRTM20000800HP	500-200	280	98	105	45.45	18.18
0329LRTM20001000HP	500-250	280	98	110	45.45	22.72
0329LRTM20001200HP	500-315	275	98	110	45.45	28.63
0329LRTM20001600HP	500-400	275	98	120	45.45	36.36
0329LRTM20001800HP	500-450	275	98	120	45.45	40.90
0329LRTM22001200HP	560-315	280	105	110	50.90	28.63
0329LRTM22001600HP	560-400	260	105	120	50.90	36.36
0329LRTM22001800HP	560-450	250	105	120	50.90	40.90
0329LRTM22001200HP	630-315	285	110	100	57.27	28.63
0329LRTM22001600HP	630-400	285	110	120	57.27	36.36
0329LRTM22001800HP	630-450	275	110	120	57.27	40.90

PE 100

CROSS TEE

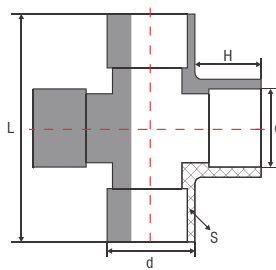
SDR 17 - PN 10


PART #	DIAMETER Ød	L	H	S
0329LCRS0200HP	63	184	60	3.71
0329LCRS0250HP	75	203	65	4.41
0329LCRS0300HP	90	240	75	5.29
0329LCRS0400HP	110	275	85	6.47
0329LCRS0450HP	125	295	85	7.35
0329LCRS0600HP	160	370	105	9.41
0329LCRS0800HP	200	435	110	11.76
0329LCRS0900HP	225	442	110	13.24
0329LCRS1000HP	250	493	120	14.71
0329LCRS1200HP	315	558	120	18.53
0329LCRS1400HP	355	640	140	20.88
0329LCRS1600HP	400	468	140	23.53
0329LCRS1800HP	450	740	140	26.47
0329LCRS2000HP	500	810	150	29.41
0329LCRS2200HP	560	875	150	32.94
0329LCRS2400HP	630	960	160	37.06
0329LCRS2800HP	710	1140	210	41.76
0329LCRS3400HP	800	1280	235	47.06

PE 100

CROSS TEE

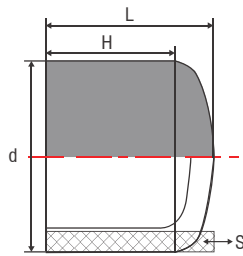
SDR 11 - PN 16



PART #	DIAMETER Ød	L	H	S
0329NCRS0200HP	63	184	60	5.73
0329NCRS0250HP	75	203	65	6.82
0329NCRS0300HP	90	240	75	8.18
0329NCRS0400HP	110	275	85	10.00
0329NCRS0450HP	125	295	85	11.36
0329NCRS0600HP	160	370	105	14.55
0329NCRS0800HP	200	435	110	18.18
0329NCRS0900HP	225	442	110	20.45
0329NCRS1000HP	250	493	120	22.73
0329NCRS1200HP	315	558	120	28.64
0329NCRS1400HP	355	640	140	32.27
0329NCRS1600HP	400	468	140	36.36
0329NCRS1800HP	450	740	140	40.91
0329NCRS2000HP	500	810	150	45.45
0329NCRS2200HP	560	875	150	50.91
0329NCRS2400HP	630	960	160	57.27
0329NCRS2800HP	710	1140	210	64.55
0329NCRS3400HP	800	1280	235	72.73

PE 100

END CAP

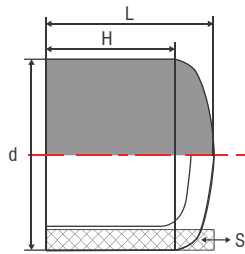
SDR 17 - PN 10


PART #	DIAMETER Ød	L	H	S
O329LCAP0250HP	75	45	35	4.41
O329LCAP0300HP	90	70	60	5.29
O329LCAP0400HP	110	70	55	6.47
O329LCAP0450HP	125	60	48	7.35
O329LCAP0500HP	140	85	70	8.24
O329LCAP0600HP	160	85	70	9.41
O329LCAP0700HP	180	105	90	10.59
O329LCAP0800HP	200	90	75	11.76
O329LCAP0900HP	225	130	115	13.24
O329LCAP1000HP	250	95	85	14.71
O329LCAP1100HP	280	140	120	16.47
O329LCAP1200HP	315	115	90	18.53
O329LCAP1400HP	355	140	115	20.88
O329LCAP1600HP	400	130	100	23.53
O329LCAP1800HP	450	140	115	26.47
O329LCAP2000HP	500	140	115	29.41
O329LCAP2200HP	560	150	115	32.94
O329LCAP2400HP	630	150	115	37.06
O329LCAP2800HP	710	160	125	41.76
O329LCAP3400HP	800	160	125	47.06
O329LCAP3600HP	900	160	125	52.94
O329LCAP4000HP	1000	160	125	58.82
O329LCAP4800HP	1200	200	155	70.59

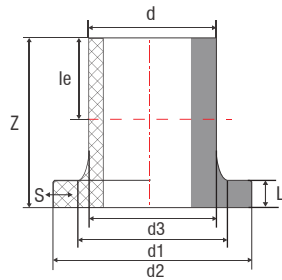
PE 100

END CAP

SDR 11 - PN 16



PART #	DIAMETER Ød	L	H	S
O329LCAP0250HP	75	45	35	6.82
O329LCAP0300HP	90	70	60	8.18
O329LCAP0400HP	110	70	55	10.00
O329LCAP0450HP	125	60	48	11.36
O329LCAP0500HP	140	85	70	12.73
O329LCAP0600HP	160	85	70	14.55
O329LCAP0700HP	180	105	90	16.36
O329LCAP0800HP	200	90	75	18.18
O329LCAP0900HP	225	130	115	20.45
O329LCAP1000HP	250	95	85	22.73
O329LCAP1100HP	280	140	120	25.45
O329LCAP1200HP	315	115	90	28.64
O329LCAP1400HP	355	140	115	32.27
O329LCAP1600HP	400	130	100	36.36
O329LCAP1800HP	450	140	115	40.91
O329LCAP2000HP	500	140	115	45.45
O329LCAP2200HP	560	150	115	50.91
O329LCAP2400HP	630	150	115	57.27
O329LCAP2800HP	710	160	125	64.55
O329LCAP3400HP	800	160	125	72.73
O329LCAP3600HP	900	160	125	81.82
O329LCAP4000HP	1000	160	125	90.91
O329LCAP4800HP	1200	200	155	109.09v

PE 100
FLANGE ADAPTOR
SDR 17 - PN 10


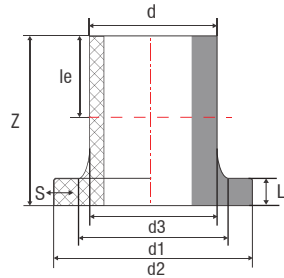
PART #	DIAMETER Ød	d1	d2	d3	le	L	Z	S
0329LFTV0200HP	63	78	102	-	88	14	120	3.8
0329LFTV0250HP	75	92	122	-	97	16	130	4.5
0329LFTV0300HP	90	108	139	-	106	17	140	5.4
0329LFTV0400HP	110	125	158	-	113	17	155	6.5
0329LFTV0450HP	125	135	158	-	120	20	160	7.4
0329LFTV0500HP	140	155	188	-	128	18	188	8.3
0329LFTV0600HP	160	175	212	154	147	18	185	9.5
0329LFTV0700HP	180	188	212	164	111	20	153	10.7
0329LFTV0800HP	200	230	268	208	125	24	188	11.9
0329LFTV0900HP	225	238	268	208	156	24	205	13.4
0329LFTV1000HP	250	288	320	260	133	25	186	14.8
0329LFTV1100HP	280	288	320	260	148	25	213	16.6
0329LFTV1200HP	315	338	375	305	166	25	223	18.7
0329LFTV1400HP	355	376	435	350	174	30	227	21.1
0329LFTV1600HP	400	430	485	396	185	33	242	23.7
0329LFTV1800HP	450	465	545	442	195	45	335	26.7
0329LFTV2000HP	500	530	590	497	212	46	339	29.7
0329LFTV2200HP	560	618	690	580	235	50	373	33.2
0329LFTV2400HP	630	645	690	585	255	50	384	37.4



PART #	DIAMETER Ød	d1	d2	d3	le	L	Z	S
0329LFTV2400HP	710	740	800	670	285	50	422	42.1
0329LFTV3000HP	800	843	905	780	312	60	463	47.4
0329LFTV3200HP	900	947	1005	884	345	60	507	53.3
0329LFTV4000HP	1000	1050	1112	972	379	65	557	59.3
0329LFTV4800HP	1200	1240	1320	1167	447	75	620	71.2

PE 100

FLANGE ADAPTOR

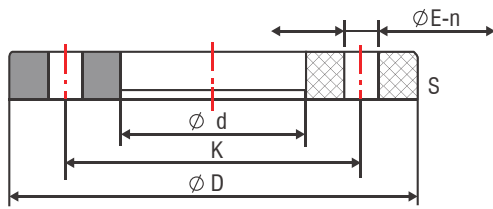
SDR 11 - PN 16


PART #	DIAMETER Ød	d1	d2	d3	le	L	Z	S
0329LFTV0200HP	63	78	102	-	88	14	120	3.8
0329LFTV0250HP	75	92	122	-	97	16	130	4.5
0329LFTV0300HP	90	108	139	-	106	17	140	5.4
0329LFTV0400HP	110	125	158	-	113	17	155	6.5
0329LFTV0450HP	125	135	158	-	120	20	160	7.4
0329LFTV0500HP	140	155	188	-	128	18	188	8.3
0329LFTV0600HP	160	175	212	154	147	18	185	9.5
0329LFTV0700HP	180	188	212	164	111	20	153	10.7
0329LFTV0800HP	200	230	268	208	125	24	188	11.9
0329LFTV0900HP	225	238	268	208	156	24	205	13.4
0329LFTV1000HP	250	288	320	260	133	25	186	14.8
0329LFTV1100HP	280	288	320	260	148	25	213	16.6
0329LFTV1200HP	315	338	375	305	166	25	223	18.7
0329LFTV1400HP	355	376	435	350	174	30	227	21.1
0329LFTV1600HP	400	430	485	396	185	33	242	23.7
0329LFTV1800HP	450	465	545	442	195	45	335	26.7

PE 100

FLANGE

ELECTROGALVANIZED STEEL
SDR 11 - PN 16



PART #	DIAMETER Ød	S
0329NFLV0150HP	50	2.94
0329NFLV0200HP	63	3.71
0329NFLV0250HP	75	4.41
0329NFLV0300HP	90	5.29
0329NFLV0400HP	110	6.47
0329NFLV0450HP	125	7.35
0329NFLV0500HP	140	8.24
0329NFLV0600HP	160	9.41
0329NFLV0700HP	180	10.59
0329NFLV0800HP	200	11.76
0329NFLV0900HP	225	13.24
0329NFLV1000HP	250	14.71
0329NFLV1100HP	280	16.47
0329NFLV1200HP	315	18.53
0329NFLV1400HP	355	20.88
0329NFLV1600HP	400	23.53
0329NFLV1800HP	450	26.47
0329NFLV2000HP	500	29.41
0329NFLV2200HP	560	32.94

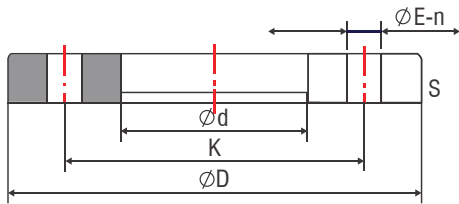


PART #	DIAMETER Ød	L
0329NFLV2400HP	630	37.06
0329NFLV2800HP	710	41.76
0329NFLV3400HP	800	47.06
0329NFLV3600HP	900	52.94
0329NFLV4000HP	1000	58.82
0329NFLV4800HP	1200	70.59

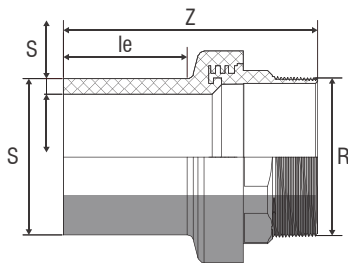
PE 100

FLANGE

PP COATED STEEL
PN 10/16



PART #	DIAMETER Ød	S1	S2
O329LFLV0150HP	50	2.94	4.55
O329LFLV0200HP	63	3.71	5.73
O329LFLV0250HP	75	4.41	6.82
O329LFLV0300HP	90	5.29	8.18
O329LFLV0400HP	110	6.47	10.00

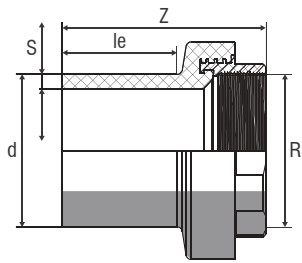
PE 100
TRANSITION ADAPTOR
**SDR 11 PE BRASS MALE THREAD
WATER 16 BAR INJECTED -SPIGOT**


PART #	DIAMETER Ød	Z	Le	S	WEIGHT(KG)
0329NTAM0050HP	20	90	41	3.0	0.084
0329NTAM0075HP	25	84	41	3.0	0.104
0329NTAM0100HP	32	103	44	3.0	0.208
0329NTAM0125HP	40	122	49	3.7	0.310
0329NTAM0150HP	50	121	55	4.6	0.398
0329NTAM0200HP	63	140	63	5.8	0.578
0329NTAM0250HP	75	146	70	6.8	0.982
0329NTAM0300HP	90	168	79	8.2	1.380
0329NTAM0400HP	110	179	82	10.0	2.030
0329NTAM0450HP	125	186	87	11.4	2.226

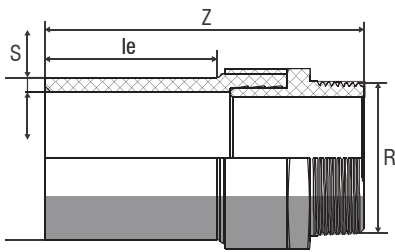
PE 100

TRANSITION ADAPTOR

SDR 11 PE BRASS MS-58 FEMALE THREAD
WATER 16 BAR INJECTED -SPIGOT



PART #	DIAMETER Ød	Z	Le	S	WEIGHT(KG)
0329NTAF0050HP	20	72	41	3.0	0.058
0329NTAF0075HP	25	72	41	3.0	0.072
0329NTAF0100HP	32	84	44	3.0	0.152
0329NTAF0125HP	40	98	49	3.7	0.318
0329NTAF0150HP	50	101	55	4.6	0.304
0329NTAF0200HP	63	115	63	5.8	0.386
0329NTAF0250HP	75	129	70	6.8	0.828
0329NTAF0300HP	90	144	79	8.2	1.122
0329NTAF0400HP	110	147	82	10.0	1.732
0329NTAF0450HP	125	153	87	11.4	1.806

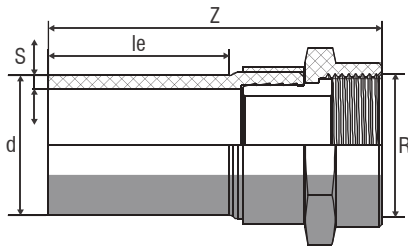
PE 100
TRANSITION ADAPTOR
**SDR 11 PE BRASS MS-58 MALE THREAD
WATER 16 BAR INJECTED - LONG SPIGOT**


PART #	DIAMETER Ød	Z	Le	S	WEIGHT(KG)
0329NE900	20	76	41	3.0	0.069
0329NE900	25	79	41	3.0	0.099
0329NE900	32	86	44	3.0	0.150
0329NE900	40	101	49	3.7	0.270
0329NE900	50	112	55	4.6	0.400
0329NE900	63	125	63	5.8	0.540

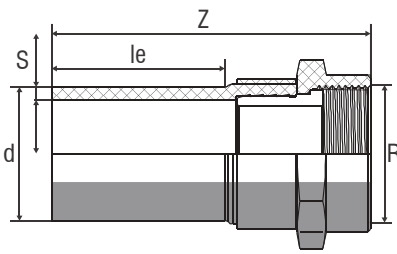
HDPE 100

TRANSITION ADAPTOR

SDR 11 PE BRASS MS-58 FEMALE THREAD
WATER 16 BAR INJECTED - LONG SPIGOT



PART #	DIAMETER Ød	Z	Le	S	WEIGHT(KG)
0329NTBM0050HP	20	75	41	3.0	0.076
0329NTBM0075HP	25	78	41	3.0	0.104
0329NTBM0100HP	32	85	44	3.0	0.154
0329NTBM0125HP	40	100	49	3.7	0.270
0329NTBM0150HP	50	111	55	4.6	0.380
0329NTBM0200HP	63	124	63	5.8	0.540

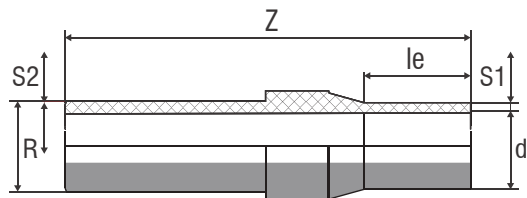
HDPE 100
TRANSITION ADAPTOR
**SDR 11 PE BRASS MS-58 LOOSE NUT
WATER 16 BAR INJECTED - LONG SPIGOT**


PART #	DIAMETER Ød	Z	Le	S	WEIGHT(KG)
0329NTBF0050HP	20	78	41	3.0	0.086
0329NTBF0075HP	25	77	41	3.0	0.113
0329NTBF0100HP	32	85	44	3.0	0.184
0329NTBF0125HP	40	97	49	3.7	0.289
0329NTBF0150HP	50	112	55	4.6	0.452
0329NTBF0200HP	63	122	63	5.8	0.660

HDPE 100

TRANSITION ADAPTOR

STEEL PIPE GR-B API SL EN-10208-1, MS -58
EPOXY OR PE COATED FOR CORROSION
RESISTANCE GR / WELD END LONG SPIGOT



PART #	DIAMETER Ød	Z	Le	S1	S2	WEIGHT(KG)
0329NTAS0075HP	25	43	43	3.0	2.9	0.650
0329NTAS0100HP	32	100	100	3.0	3.4	0.950
0329NTAS0125HP	40	57	57	3.7	3.6	1.310
0329NTAS0150HP	50	62	62	4.6	3.7	1.570
0329NTAS0200HP	63	106	106	5.8	3.9	2.450
0329NTAS0250HP	75	70	70	6.8	5.2	3.710
0329NTAS0300HP	90	83	83	8.2	5.5	5.110
0329NTAS0400HP	110	156	156	10.0	6.0	7.7610
0329NTAS0450HP	125	92	92	11.4	6.0	7.670
0329NTAS0500HP	140	170	170	11.4	7.1	14.900
0329NTAS0600HP	160	110	110	14.6	7.1	14.744
0329NTAS0700HP	180	110	110	16.4	7.1	15.480
0329NTAS0800HP	200	112	112	18.2	8.2	44.510
0329NTAS0900HP	225	120	120	20.5	8.2	44.840
0329NTAS1000HP	250	129	129	22.7	9.3	71.890
0329NTAS1100HP	280	139	139	25.4	9.3	72.080
0329NTAS1200HP	315	150	150	28.6	9.5	106.370



 /hydroplast-fittings

 hydroplast

 /hydroplast

 info@hydroplast.pk

WWW.HYDROPLAST.PK

HDPE 100
PE FITTINGS