



AR TRADER



STAINLESS STEEL PIPE

GET A QUOTE

www.artraders.com

Stainless Steel Pipe, Fittings & Flanges

Stainless Steel Pipe – Welded & Seamless – ASTM A312M / ASTM A790M

Grades: 304/304L, 316/316L, 2205

Stainless steel pipe is available in a wide range of sizes in welded and seamless construction, ex-stock or on indent.

Nominal Pipe Size		Outside Diameter (mm)	Wall Thickness (mm)					
			Sch 10S		Sch 40S		Sch 80S	
DN	NPS		WT (mm)	Weight (kg/m)	WT (mm)	Weight (kg/m)	WT (mm)	Weight (kg/m)
6	¼	10.3	1.24	0.28	1.73	0.37	2.41	0.47
8	¼	13.7	1.65	0.49	2.24	0.63	3.02	0.8
10	⅜	17.1	1.65	0.63	2.31	0.84	3.2	1.1
15	½	21.3	2.11	1	2.77	1.27	3.73	1.62
20	¾	26.7	2.11	1.28	2.87	1.69	3.91	2.2
25	1	33.4	2.77	2.09	3.38	2.5	4.55	3.24
32	1¼	42.2	2.77	2.69	3.56	3.39	4.85	4.47
40	1½	48.3	2.77	3.11	3.68	4.05	5.08	5.41
50	2	60.3	2.77	3.93	3.91	5.44	5.54	7.48
65	2½	73	3.05	5.26	5.16	8.63	7.01	11.41
80	3	88.9	3.05	6.46	5.49	11.29	7.62	15.27
90	3½	101.6	3.05	7.41	5.74	13.57	8.08	18.64
100	4	114.3	3.05	8.37	6.02	16.08	8.56	22.32
125	5	141.3	3.4	11.56	6.55	21.77	9.53	30.97
150	6	168.3	3.4	13.83	7.11	28.26	10.97	42.56
200	8	219.1	3.76	19.97	8.18	42.55	12.7	64.64
250	10	273.1	4.19	27.79	9.27	60.31	12.7	81.56
300	12	323.9	4.57	35.99	9.53	73.88	12.7	97.47
350	14	355.6	4.78	41.36	9.53	81.33	12.7	107.4
400	16	406.4	4.78	47.34	9.53	93.27	12.7	123.31
450	18	457	4.78	53.31	9.53	105.17	12.7	139.16
500	20	508	5.54	68.65	9.53	117.15	12.7	155.13
550	22	559	5.54	75.62				
600	24	610	6.35	94.53	9.53	141.12	12.7	187.07
650	26	660						
700	28	711						
750	30	762	7.92	147.29				

- Stainless steel pipe nominal dimensions listed in the table are based on ASTM A312M and ASME B36.19M.
- These dimensions are nominal – substantial tolerances apply – refer to AR Traders *TechNote 12* and the ASTM and ASME standards for details.
- For other wall thicknesses and larger sizes consult ASME B36.10M; stainless steel pipe may be available to these carbon steel pipe sizes.

Welded Butt Welding Fittings – ASTM A403M & ASME B16.9



Product range and theoretical weights (kg)										
DN	Schedule 10S					Schedule 40S				
	900 Elbow	450 Elbow	Equal tee	Stub end type B	End cap	900 Elbow	450 Elbow	Equal tee	Stub end type B	End cap
15	0.06	0.03	0.09	0.07	0.03	0.08	0.04	0.10	0.08	0.04
20	0.07	0.03	0.13	0.09	0.05	0.08	0.04	0.17	0.11	0.07
25	0.14	0.08	0.28	0.16	0.08	0.15	0.11	0.29	0.17	0.10
32	0.23	0.11	0.49	0.22	0.10	0.26	0.17	0.59	0.25	0.18
40	0.30	0.17	0.68	0.25	0.11	0.40	0.23	0.86	0.31	0.20
50	0.50	0.25	0.85	0.43	0.13	0.70	0.40	1.28	0.61	0.23
65	0.85	0.48	1.41	0.57	0.19	1.40	0.77	2.19	0.80	0.27
80	1.25	0.63	1.77	0.72	0.25	2.20	1.08	3.31	1.13	0.42
100	2.10	1.08	3.46	1.09	0.68	4.47	1.47	5.27	1.87	1.14
125	3.65	1.82	5.44	1.47	1.11	6.80	2.84	9.63	2.79	2.13
150	5.45	2.72	8.03	2.15	1.42	10.89	5.44	10.99	3.57	3.23
200	10.20	5.33	15.65	3.22	2.38	21.54	10.77	20.91	6.07	5.19
250	18.15	9.75	26.76	5.13	4.45	38.56	19.27	35.38	10.07	9.00
300	25.80	13.62	39.46	8.16	7.50	59.42	29.71	62.14	14.29	15.00
350	36.29	18.37	48.53	10.88	8.17	79.38	35.15	79.31	17.14	16.00
400	47.63	23.81	58.97	12.70	10.67	99.79	45.81	99.79	20.41	21.00
450	59.87	29.94	79.65	17.23	13.00	129.73	59.40	129.73	27.21	26.00
500	99.80	49.90	103.42	21.77	17.00	162.38	74.84	162.39	29.94	34.00
600	140.61	70.31	155.58	27.21	26.00	225.89	105.23	225.90	38.55	52.00

Grades: Butt welding fittings are usually supplied as dual certified 304/304L or 316/316L

AR TRADER

Welded Butt Welding Fittings – ASTM A403M & ASME B16.9



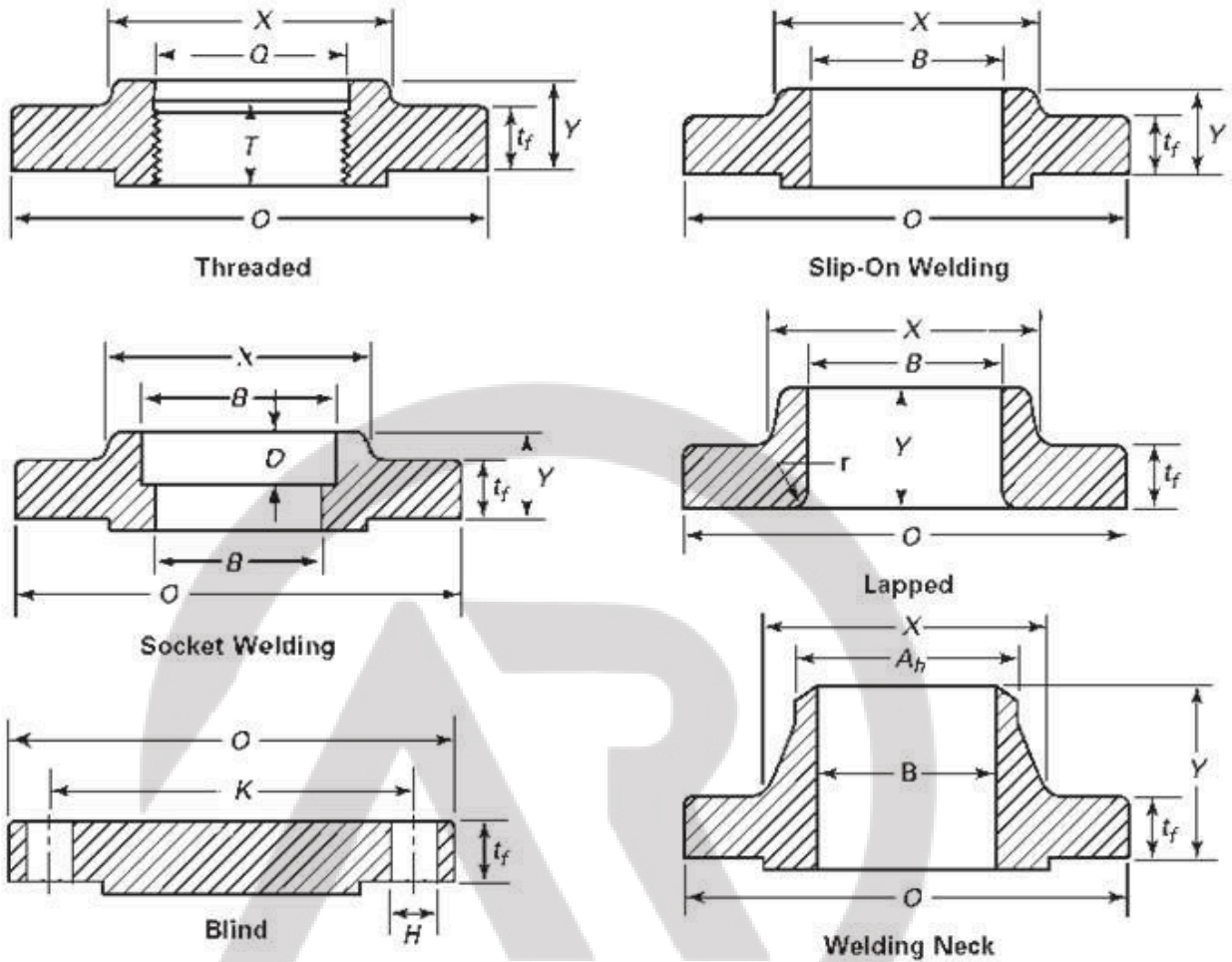
Product range and theoretical weights (kg)						
DN	Schedule 10S			Schedule 40S		
	Con reducer	Ecc reducer	Reducing tee	Con reducer	Ecc reducer	Reducing tee
20x15	0.10	0.10	0.11	0.14	0.14	0.15
25x15	0.12	0.12	0.25	0.15	0.15	0.26
25x20	0.13	0.13	0.25	0.16	0.16	0.27
32x20	0.18	0.18	0.44	0.22	0.22	0.52
32x25	0.18	0.18	0.45	0.22	0.22	0.53
40x20	0.18	0.18	0.58	0.24	0.24	0.74
40x25	0.19	0.19	0.60	0.26	0.26	0.76
40x32	0.21	0.24	0.61	0.28	0.28	0.77
50x25	0.28	0.28	0.73	0.40	0.40	1.10
50x32	0.30	0.30	0.74	0.44	0.44	1.13
50x40	0.31	0.31	0.76	0.45	0.45	1.15
65x40	0.44	0.44	1.24	0.76	0.76	1.94
65x50	0.47	0.47	1.25	0.80	0.80	1.98
80x40	0.51	0.51	1.52	0.94	0.94	2.85
80x50	0.55	0.55	1.56	1.00	1.00	2.91
80x65	0.59	0.59	1.59	1.08	1.08	2.98
100x40	0.68	0.68	2.90	1.36	1.36	4.53
100x50	0.78	0.78	2.94	1.57	1.57	4.48
100x65	0.83	0.83	2.97	1.66	1.66	4.54
100x80	0.87	0.87	3.04	1.74	1.74	4.64
125x100	1.49	1.49	5.49	2.98	2.98	8.47
150x80	1.82	1.82	6.86	3.98	3.98	11.94
150x100	1.96	1.96	7.10	4.07	4.07	9.68
150x125	2.00	2.00	7.27	4.07	4.07	9.99
200x100	3.01	3.01	13.46	6.55	6.55	17.98
200x150	3.19	3.19	14.08	6.94	6.94	18.82
250x100	4.73	4.73	22.75	10.52	10.52	30.07
250x150	5.00	5.00	23.55	11.12	11.12	31.13
250x200	5.20	5.20	24.08	11.56	11.56	31.84
300x200	7.67	7.67	34.73	15.98	15.98	54.43
300x250	7.98	7.98	35.52	16.63	16.63	55.79
350x300	15.29	15.29	43.96	30.58	30.58	71.21
400x200	16.70	16.70	49.90	33.40	33.40	84.82
400x250	17.22	17.22	50.80	35.43	35.43	85.73
400x300	18.35	18.35	51.71	36.70	36.70	87.54

Grades: Butt Welding Fittings are usually supplied as dual certified 304/304L or 316/316L

Stainless Steel ASME/ANSI Flanges – Dimensions & Weights

These diagrams relate to the tables of flange specified dimensions on the following pages.

The Notes shown on this page also relate to the tables on the following pages.



Note 1: To be specified by purchase

Note 2: Flange weights are approximate

Note 3: Welding neck flange bore sizes listed are for sch 40S / Standard Wall pipe

Common stock items are –

- Slip-On Welding
- Welding Neck
- Blind

AR TRADER

Stainless Steel ASME/ANSI Flanges – Dimensions & Weights

Class 150 Flanges to ASME B16.5																	
Nominal Size		Dimensions													Flange Weight (kg)		
DN	NPS	Flange OD (mm) O	Thick-ness min (mm) t _f	Hub Diam. (mm) X	Hub Diam. Welding Neck (mm) A _n	Length Thru Hub		Bore		Bolt Drilling					Slip-on	Welding Neck	Blind
						Slip-on/Socket Welding (mm) Y	Welding Neck (mm) Y	Slip-on/Socket Welding min (mm) B	Welding Neck / Socket Welding (mm) B	Circle Diam. (mm) K	Hole Diam. (mm) H	Bolts (No.)	RF Stud Bolt Length (mm)	RF Machine Bolt Length (mm)			
15	½	90	9.6	30	21.3	14	46	22.2	15.8	60.3	15.9	4	55	50	0.4	0.5	0.4
20	¾	100	11.2	38	26.7	14	51	27.7	20.9	69.9	15.9	4	65	50	0.6	0.7	0.6
25	1	110	12.7	49	33.4	16	54	34.5	26.6	79.4	15.9	4	65	55	0.8	1.0	0.9
32	1 ¼	115	14.3	59	42.2	19	56	43.2	35.1	88.9	15.9	4	70	55	1.0	1.3	1.2
40	1 ½	125	15.9	65	48.3	21	60	49.5	40.9	98.4	15.9	4	70	65	1.3	1.7	1.5
50	2	150	17.5	78	60.3	24	62	61.9	52.5	120.7	19.1	4	85	70	2.1	2.6	2.4
65	2 ½	180	20.7	90	73.0	27	68	76.6	62.7	139.7	19.1	4	90	75	3.3	4.1	3.9
80	3	190	22.3	108	88.9	29	68	90.7	77.9	152.4	19.1	4	90	75	3.9	4.9	4.9
90	3 ½	215	22.3	122	101.6	30	70	103.4	90.1	177.8	19.1	8	90	75	4.8	6.1	6.2
100	4	230	22.3	135	114.3	32	75	116.1	102.3	190.5	19.1	8	90	75	5.3	6.8	7.0
125	5	255	22.3	164	141.3	35	87	143.8	128.2	215.9	22.2	8	95	85	6.1	8.6	8.5
100	4	230	22.3	135	114.3	32	75	116.1	102.3	190.5	19.1	8	90	75	5.3	6.8	7.0
125	5	255	22.3	164	141.3	35	87	143.8	128.2	215.9	22.2	8	95	85	6.1	8.6	8.5
150	6	280	23.9	192	168.3	38	87	170.7	154.1	241.3	22.2	8	100	85	7.5	11	11
200	8	345	27.0	246	219.1	43	100	221.5	202.7	298.5	22.2	8	110	90	12	18	20
250	10	405	28.6	305	273.0	48	100	276.2	254.6	362.0	25.4	12	115	100	17	24	29
300	12	485	30.2	365	323.8	54	113	327.0	304.8	431.8	25.4	12	120	100	26	37	43
350	14	535	33.4	400	355.6	56	125	359.2	Note (1)	476.3	28.6	12	135	115	35	48	58
400	16	595	35.0	457	406.4	62	125	410.5	Note (1)	539.8	28.6	16	135	115	45	61	76
450	18	635	38.1	505	457.0	67	138	461.8	Note (1)	577.9	31.8	16	145	125	49	68	94
500	20	700	41.3	559	508.0	71	143	513.1	Note (1)	635.0	31.8	20	160	140	62	85	122
600	24	815	46.1	663	610.0	81	151	616.0	Note (1)	749.3	34.9	20	170	150	87	115	186

Class 300 Flanges to ASME B16.5																	
Nominal Size		Dimensions													Flange Weight (kg)		
DN	NPS	Flange OD (mm) O	Thick-ness min (mm) t _f	Hub Diam. (mm) X	Hub Diam. Welding Neck (mm) A _n	Length Thru Hub		Bore		Bolt Drilling					Slip-on	Welding Neck	Blind
						Slip-on/Socket Welding (mm) Y	Welding Neck (mm) Y	Slip-on/Socket Welding min (mm) B	Welding Neck / Socket Welding (mm) B	Circle Diam. (mm) K	Hole Diam. (mm) H	Bolts (No.)	RF Stud Bolt Length (mm)	RF Machine Bolt Length (mm)			
15	½	95	12.7	38	21.3	21	51	22.2	15.8	66.7	15.9	4	65	55	0.6	0.8	0.6
20	¾	115	14.3	48	26.7	24	56	27.7	20.9	82.6	19.1	4	75	65	1.2	1.3	1.2
25	1	125	15.9	54	33.4	25	60	34.5	26.6	88.9	19.1	4	75	65	1.4	1.6	1.4
32	1 ¼	135	17.5	64	42.2	25	64	43.2	35.1	98.4	19.1	4	85	70	1.7	2.1	1.8
40	1 ½	155	19.1	70	48.3	29	67	49.5	40.9	114.3	22.2	4	90	75	2.6	3.1	2.7
50	2	165	20.7	84	60.3	32	68	61.9	52.5	127.0	19.1	8	90	75	2.9	3.4	3.1
65	2 ½	190	23.9	100	73.0	37	75	74.6	62.7	149.2	22.2	8	100	85	4.5	5.3	4.8
80	3	210	27.0	117	88.9	41	78	90.7	77.9	168.3	22.2	8	110	90	6.2	7.3	6.8
90	3 ½	230	28.6	133	101.6	43	79	103.4	90.1	184.2	22.2	8	110	95		8.2	9.5
100	4	255	30.2	146	114.3	46	84	116.1	102.3	200.0	22.2	8	115	95		11	12
125	5	280	33.4	178	141.3	49	97	143.8	128.2	235.0	22.2	8	120	110		15	16
150	6	320	35.0	206	168.3	51	97	170.7	154.1	269.9	22.2	12	120	110		20	21
200	8	380	39.7	260	219.1	60	110	221.5	202.7	330.2	25.4	12	140	120		30	35
250	10	445	46.1	321	273.0	65	116	276.2	254.6	387.4	28.6	16	160	140		44	55
300	12	520	49.3	375	323.8	71	129	327.0	304.8	450.8	31.8	16	170	145		64	79
350	14	585	52.4	425	355.6	75	141	359.2	Note (1)	514.4	31.8	20	180	160		88	107
400	16	650	55.6	483	406.4	81	144	410.5	Note (1)	571.5	34.9	20	190	165		113	139
450	18	710	58.8	533	457.0	87	157	461.8	Note (1)	628.6	34.9	24	195	170		138	177
500	20	775	62.0	587	508.0	94	160	513.1	Note (1)	685.8	34.9	24	205	185		167	223
600	24	915	68.3	702	610.0	105	167	616.0	Note (1)	812.8	41.3	24	230	205		235	342

These flanges are available in a very wide range of sizes, ratings and types in 304/304L and 316/316L. Other grades such as 2205 are available subject to enquiry.

Stainless Steel Table Flanges – Dimensions & Weights

These diagrams relate to the tables of flange specified dimensions on the following pages. Refer note below regarding terminology of Table flange types.

Types of Table Flanges specified in AS 2129.

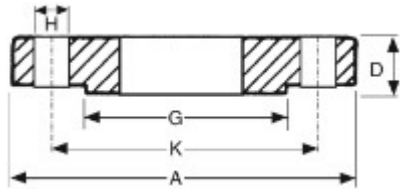
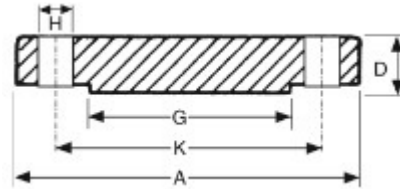
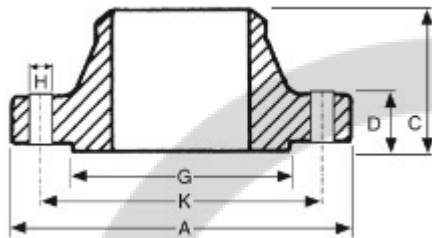


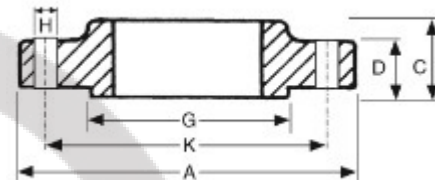
PLATE
 "SLIP-ON WELDING"



BLIND
 ("BLANK")



WELDING NECK (WN)



BOSS

Notes to these diagrams and the following tables of dimensions.

- Diagrams above show the optional Raised Face. Standard AR Traders Table Flange stock is Flat Faced. All weights are approximate A diametrical clearance of 4mm maximum applies
- to pipe or tube OD for plate flanges The flange thickness "D" dimension includes the raised face height, if a non-standard raised sealing face is present.
- Welding Neck bore is derived from the pipe schedule
- Atlas standard stock table flanges are plate and blind type. Note that AS2129 plate flanges are usually referred to by end users as "slip-on welding" flanges and this terminology is also used in Atlas product descriptions.
- PN16 "DIN" flanges to EN1092-1 and AS4087 waterworks flanges are also available subject to enquiry.
-

AR TRADER

Stainless Steel Table Flanges – Dimensions & Weights

Nominal Size	Dimensions (mm)							Weight (kg)		
	DN	OD A	Thickness D	Raised Face Diam. G	Drilling			Bolt Size & Thread	SOW	Blind
					Bolt Circle Diam. K	Bolt Hole Diam. H	Number of Bolts			
15	95	*5	47	67	14	4	M12	0.6	0.6	
20	100	*5	53	73	14	4	M12	0.7	0.7	
25	115	*5	65	83	14	4	M12	0.9	1.0	
32	120	*6	67	87	14	4	M12	0.9	1.1	
40	135	*6	78	98	14	4	M12	1.2	1.4	
50	150	*8	90	114	18	4	M16	1.4	1.7	
65	165	*8	103	127	18	4	M16	1.6	2.1	
80	185	*10	122	146	18	4	M16	2.0	2.7	
90	205	*10	141	165	18	4	M16	2.2	3.2	
100	215	*10	154	178	18	4	M16	2.5	3.6	
125	255	13	186	210	18	8	M16	3.3	4.9	
150	280	13	211	235	18	8	M16	4.0	6.1	
200	335	13	268	292	18	8	M16	5.0	8.8	
250	405	16	328	356	22	8	M20	8.7	15.8	
300	455	19	378	406	22	12	M20	11.3	23.6	
350	525	22	438	470	26	12	M24	19.6	38.6	
400	580	22	489	521	26	12	M24	22.3	44.9	
450	640	25	532	584	26	12	M24	29.0	63.0	
500	705	29	609	641	26	16	M24	39.9	86.0	
550	760	29	637	699	30	16	M27	50.0	107.0	
600	825	32	720	756	30	16	M27	58.0	125.0	
700	910	35	809	845	30	20	M27			
750	995	41	888	927	33	20	M30			
800	1060	41	942	984	36	20	M33			
850	1090	44	974	1016	36	20	M33			
900	1175	48	1050	1092	36	24	M33			
1000	1255	51	1133	1175	36	24	M33			
1200	1490	60	1368	1410	36	32	M33			

Nominal Size	Dimensions (mm)							Weight (kg)		
	DN	OD A	Thickness D	Raised Face Diam. G	Drilling			Bolt Size & Thread	SOW	Blind
					Bolt Circle Diam. K	Bolt Hole Diam. H	Number of Bolts			
15	95	*6	47	67	14	4	M12	0.6	0.7	
20	100	*6	53	73	14	4	M12	0.7	0.8	
25	115	*7	63	83	14	4	M12	0.9	1.0	
32	120	*8	67	87	14	4	M12	1.0	1.1	
40	135	*9	78	98	14	4	M12	1.2	1.4	
50	150	*10	90	114	18	4	M16	1.4	1.7	
65	165	*10	103	127	18	4	M16	1.6	2.1	
80	185	*11	122	146	18	4	M16	2.0	2.7	
90	205	12	141	165	18	8	M16			
100	215	13	154	178	18	8	M16	2.5	3.6	
125	255	14	186	210	18	8	M16	3.7	5.5	
150	280	17	207	235	22	8	M20	5.0	8.3	
200	335	19	264	292	22	8	M20	7.1	12.9	
250	405	22	328	356	22	12	M20	11.4	21.9	
300	455	25	374	406	26	12	M24	15.1	31.8	
350	525	29	438	470	26	12	M24	25.3	47.6	
400	580	32	489	521	26	12	M24	31.3	66.0	
450	640	35	552	584	26	16	M24	40.8	87.0	
500	705	38	609	641	26	16	M24	53.0	114.0	
550	760	44	663	699	30	16	M27			
600	825	48	717	756	33	16	M30	85.0	195.0	
700	910	51	806	845	33	20	M30			
750	995	54	885	927	36	20	M33			
800	1060	54	942	984	36	20	M33			
850	1090	57	974	1016	36	20	M33			
900	1175	64	1050	1092	36	24	M33			
1000	1255	67	1130	1175	39	24	M36			
1200	1490	79	1365	1410	39	32	M36			

Screwed Low Pressure “150lb” BSP 316 Fittings



Product range and theoretical weights (kg)												
DN	Round socket	Pipe nipple TBE	Pipe nipple TOE	Hex/round cap	Hex nipple	3 pce union	Female 90o elbow	Male/fem 90o elbow	Female tee	Hex head plug	Hex locknut	Square head plug
6	0.02	0.02	0.01	0.02	0.02	0.13	0.03	0.02	0.05	0.02	0.02	0.01
8	0.04	0.03	0.02	0.03	0.03	0.11	0.04	0.04	0.05	0.03	0.02	0.02
10	0.05	0.04	0.03	0.03	0.05	0.18	0.06	0.06	0.09	0.03	0.03	0.03
15	0.09	0.08	0.05	0.07	0.08	0.22	0.10	0.11	0.14	0.05	0.04	0.03
20	0.13	0.11	0.08	0.10	0.11	0.33	0.14	0.16	0.21	0.09	0.05	0.07
25	0.20	0.16	0.11	0.17	0.17	0.50	0.27	0.26	0.36	0.12	0.10	0.10
32	0.29	0.29	0.19	0.24	0.25	0.70	0.38	0.40	0.50	0.19	0.14	0.15
40	0.34	0.35	0.23	0.38	0.37	0.87	0.51	0.50	0.70	0.27	0.15	0.21
50	0.52	0.58	0.30	0.47	0.53	1.39	0.75	0.82	1.01	0.40	0.25	0.31
65	0.78	0.92	0.57	0.85	1.14	2.07	1.69	1.68	2.41	0.76	0.51	0.59
80	1.05	1.45	0.86	1.24	1.37	2.98	2.33	2.06	3.32	1.03	0.55	0.71
100	1.90	2.07	1.38	2.09	1.90	4.82	3.43	3.45	4.81	1.66	0.92	1.10

TBE = Threaded Both Ends
 TOE = Threaded One End

Screwed Low Pressure “150 lb” BSP 316 Fittings



BSP Fittings

Dimensions: generally to ISO4144.

Threading: BS21 (ISO 7-1).

Feed materials – sockets, TOE nipples, TBE nipples
manufactured from stainless steel pipe to ASTM A312M.

- Other fittings made from investment castings.

Product range and theoretical weights (kg)		
DN	Hex reducing bush	Hex reducing nipple
8x6	0.01	0.03
10x6	0.02	0.05
10x8	0.03	0.05
15x6	0.04	0.08
15x8	0.06	0.08
15x10	0.06	0.08
20x8	0.08	0.12
20x10	0.07	0.12
20x15	0.05	0.12
25x10	0.14	0.17
25x15	0.12	0.17
25x20	0.08	0.17
32x25	0.15	0.26
40x20	0.33	0.36
40x25	0.26	0.36
40x32	0.17	0.36
50x25	0.56	0.50
50x32	0.45	0.50
50x40	0.37	0.50
65x50	0.51	0.85
80x50	0.94	1.28
80x55	1.23	1.28

AR TRADER

Screwed Class 3000 NPT Fittings – ASTM A182M and ASME B16.11



Grade 316

Product range and theoretical weights (kg)												
DN	Hex cap	Coupling	45o Elbow	90o Elbow	Hex nipple	Hex plug	Union	Female tee	Schedule 40S		Schedule 80S	
									Nipple TBE	Nipple TOE	Nipple TBE	Nipple TOE
8	0.05	0.06	0.13	0.14	0.03	0.03	0.21	0.20	0.06	0.05	0.08	0.06
10	0.06	0.07	0.25	0.27	0.06	0.06	0.27	0.31	0.08	0.06	0.11	0.09
15	0.13	0.14	0.36	0.37	0.08	0.08	0.46	0.49	0.13	0.09	0.16	0.10
20	0.21	0.20	0.53	0.60	0.15	0.15	0.61	0.80	0.17	0.12	0.22	0.16
25	0.37	0.30	0.78	1.08	0.24	0.24	0.99	1.31	0.24	0.18	0.31	0.23
32	0.60	0.73	1.02	1.22	0.37	0.37	1.55	1.61	0.33	0.24	0.44	0.35
40	0.73	1.03	1.70	2.45	0.45	0.45	1.90	3.20	0.40	0.30	0.53	0.40
50	1.10	1.35	2.35	2.50	0.76	0.76	2.86	3.55	0.53	0.40	0.74	0.56

TBE = Threaded Both Ends

TOE = Threaded One End

Grade 304

Product range and theoretical weights (kg)					
DN	Coupling	90o Elbow	Hex nipple	Hex plug	Union
15	0.11	0.41	0.08	0.07	0.30
20	0.20	0.68	0.17	0.13	0.58
25	0.29	1.02	0.38	0.20	0.76
32	0.73	1.22	0.37	0.41	1.55
40	1.00	2.44	0.63	0.60	1.60
50	1.42	2.52	1.10	1.10	2.42

Class 6000 and 9000

Higher pressure fittings are available subject to enquiry

Screwed Class 3000 NPT 316 Fittings – ASTM A182M and ASME B16.11



Product range and theoretical weights (kg)				
DN	Hex reducing bush	Hex reducing nipple	Swage nipple TBE 80S	Reducing insert
8x6	0.02	0.05	0.04	0.04
10x6	0.02	0.06	0.06	0.05
10x8	0.03	0.06	0.06	0.05
15x6	0.04	0.08	0.14	0.10
15x8	0.06	0.08	0.14	0.10
15x10	0.06	0.08	0.18	0.10
20x8	0.08	1.15	0.18	0.12
20x10	0.07	0.17	0.18	0.12
20x15	0.05	0.17	0.18	0.12
25x8	0.12	0.38	0.25	0.16
25x10	0.14	0.38	0.25	0.16
25x15	0.12	0.38	0.25	0.16
25x20	0.12	0.38	0.25	0.16
40x15	0.21	0.63	0.60	0.45
40x20	0.21	0.63	0.60	0.45
40x25	0.21	0.63	0.60	0.45
40x32	0.21	0.64	0.60	0.45
50x25	0.45	0.68	1.14	0.70
50x40	0.50	0.70	1.14	0.70

TBE = Threaded Both Ends

Class 6000 and 9000

Higher pressure fittings are available subject to enquiry

AR TRADER

Socket Weld Class 3000 Fittings – ASTM A182M and ASME B16.11



Grade 316L

Product range and theoretical weights (kg)						
DN	Cap	Coupling	45o Elbow	90o Elbow	Equal tee	Union
8	0.06	0.07	0.25	0.26	0.30	0.21
15	0.12	0.14	0.36	0.36	0.50	0.30
20	0.21	0.20	0.53	0.60	0.80	0.50
25	0.40	0.40	0.80	1.10	1.31	0.80
32	0.60	0.70	1.00	1.20	1.61	1.20
40	0.70	1.00	1.70	2.40	3.20	1.50
50	1.10	1.30	2.30	2.50	3.50	2.30

Grade 316L Reducing Inserts

Product range and theoretical weights (kg)			
DN	Reducing inserts	DN	Reducing inserts
20x15	0.12	40x25	0.45
25x15	0.16	50x25	0.7
25x20	0.16	50x40	0.7
40x20	0.45		

Class 6000 and 9000 higher pressure rated fittings are available subject to enquiry.

Socket Weld Class 3000 Fittings – ASTM A182M and ASME B16.11

Grade 304L

Product range and theoretical weights (kg)						
DN	Cap	Coupling	45o Elbow	90o Elbow	Equal tee	Union
8	0.06	0.07	0.25	0.26	0.30	0.21
15	0.12	0.14	0.36	0.36	0.50	0.30
20	0.21	0.20	0.53	0.60	0.80	0.50
25	0.40	0.40	0.80	1.10	1.31	0.80
32	0.60	0.70	1.00	1.20	1.61	1.20
40	0.70	1.00	1.70	2.40	3.20	1.50
50	1.10	1.30	2.30	2.50	3.50	2.30

Branch Outlet Class 3000 304L and 316L – ASTM A182M and ASME B16.11

Product range and theoretical weights (kg)						
DN	Socket outlet 304L	Threaded outlet 304L	Welding outlet 304L	Socket outlet 316L	Threaded outlet 316L	Welding outlet 316L
15	0.15	0.12	0.13	0.15	0.12	0.13
20	0.17	0.24	0.24	0.17	0.24	0.24
25	0.27	0.38	0.38	0.27	0.38	0.38
40	0.48	0.66	0.66	0.48	0.66	0.66
50	0.07	1.02	1.02	0.75	1.02	1.02

Class 6000 and 9000

Higher pressure fittings are available subject to enquiry

AR TRADER